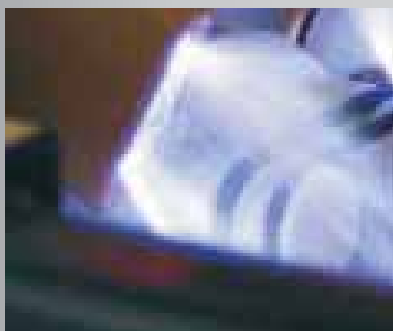
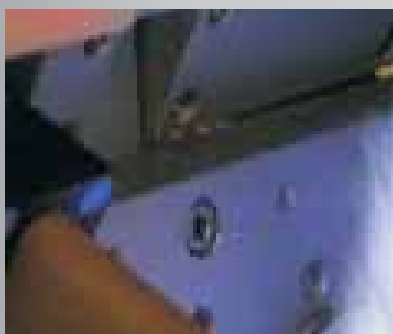




# Corona treatment unit Uni-Systems LF



*low frequency range*



**SICATECH**



## The perfect solution of Corona pretreatment for all types of synthetics.

All uni-system-tools work in low frequency range and are easy to handle. They can be used both as manual work stations and in production line.

This LF-serial is provided with up to 4 Corona sections, whereas you may individually address each Corona section address. Further we offer special customised solutions.



connections for SPS-control



simple connector system for change of corona sections

Corona sections are available in 3 different sizes (up to 95mm width)

### Technical data

	LF 1	LF 2	LF 3	LF 4
number of corona sections	1	2	3	4
max. pretreatment area	65 x 95 mm	65 x 95 mm x 2	65 x 95 mm x 3	65 x 95 mm x 4
power	800 Watt	800 Watt x 2	800 Watt x 3	800 Watt x 4
sizes	410 x 410 x 230 mm	410 x 410 x 230 mm	820 x 420 x 250 mm	820 x 420 x 250 mm
weight	25 kg	40 kg	65 kg	80 kg
power supply	230 Volt	230 Volt	2 x 230 Volt	2 x 230 Volt

### Our Headquarters

Media Service Grulms GmbH  
Rheinhorststr. 1-3  
D-67071 Ludwigshafen

Fon: +49 (621) 150328-0  
Fax: +49 (621) 150328-99

info@grulms.de  
www.grulms.de

### Our Affiliated Offices

Tampomark Inc. USA  
W227 N937 Westmound Drive #1A  
US-53072 Pewaukee, WI

Fon: +1 (262) 5444860  
Fax: +1 (262) 5444865

info@tampomark.us  
www.tampomark.us

Tampomark Česko s.r.o.  
Václavkova 1115  
CZ-29301 Mladá Boleslav

Fon: +420 (326) 307900  
Fax: +420 (326) 307901

info@tampomark.cz  
www.tampomark.cz

